

Bzdochy (Hemiptera: Heteroptera) pohoria Pienin (Západné Karpaty)

Vladimír HEMALA

Ústav botaniky a zoologie, Přírodovědecká fakulta, Masarykova univerzita, Kotlářská 2, CZ-611 37 Brno
E-mail: vladimir.hemala@gmail.com

Úvod

Bzdochy Pienin sú dosiaľ relatívne málo preskúmané, pričom výrazne lepšia je situácia na ich poľskej strane ako na slovenskej. Zatiaľ čo z poľských Pienin je dosiaľ známych spolu 264 druhov^{2-4, 6-7, 9-12, 14, 16-27, 29-32, 42-46}, v slovenských Pieninách to bolo do roku 2017 len 34 druhov^{1, 13, 15, 28, 33-40}. Počas posledného prieskumu v roku 2017, ktorý sa uskutočnil počas XLI. Východoslovenského tábora ochrancov prírody, bolo zaznamenaných 54 ďalších druhov dovtedy nezaznamenaných na slovenskej strane pohoria¹³, čím sa počet v súčasnosti známych druhov slovenských Pienin zdvihol na 88. Keďže z toho iba 9 druhov nie je zatiaľ známych zároveň aj z poľskej strany, súhrnný počet druhov doteraz známych v obidvoch častiach Pienin dokopy je 273.

Druhy zaradené na červených zoznamoch

Teloleuca branczikii (Reuter, 1891) (čelad' Saldidae) → Obr. 1

Červený zoznam Slovenska: LR:nt (= takmer ohrozený) (Štepanovičová & Bianchi 2001)

Lokalita: PL: Krościenko nad Dunajcem, 7.VII.1910 (Smreczyński 1954)

SK: „na brehu Dunajca v Pieninách“, J. Roubal legít [?1919–1938] (Balthasar 1942)

SK: Červený Kláštor, 8.VIII.1969 (Rus 2004)

Eurycolpus flaveolus (Stål, 1858) (čelad' Miridae) → Obr. 2

Polska czerwona księga: EN (= ohrozený) (Drohojowska i in. 2002)

EX (= vyhynutý) (Gorczyca 2004)

Poznámka: V Poľsku známy výlučne iba z pohoria Pienin!

Lokalita: PL: Krościenko, 4.VIII.[?] (Smreczyński 1954)

PL: „Pieniny, z Krościenka do Szczawniczy“, 20.VIII.1910 (Smreczyński 1954)

PL: Marcelowy Wąwóz, 16.VIII.2005 (Taszkowski & Pasińska 2017)

PL: Kotłowy Potok, 20.VIII.2005 (Taszkowski & Pasińska 2017)

PL: Polana Podłazce, 19.VIII.2006 i 6.VI.2007 (Taszkowski & Pasińska 2017)

SK: Haligovské skaly, 1.VIII.2017 (Hemala in press.)

SK: Straňany, dolina Kýčerského potoka, 3.VIII.2017 (Hemala in press.)



1: *Teloleuca branczikii*. Zberkový kus zo zbierok Moravského múzea v Brne. Fotil: Luboš Dembický. 2: *Eurycolpus flaveolus*. ♂, Haligovské skaly, 1.VIII.2017, V. Hemala lgt. Fotil: Luboš Dembický.

Tuponia prasina (Fieber, 1864) (čelad' Miridae)

Polska czerwona księga: LC (= najmenej ohrozený) (Drohojowska i in. 2002)

Lokalita: PL: Krościenko (Smreczyński 1954)

Eurydema fieberi Fieber, 1837 (čelad' Pentatomidae)

Polska czerwona księga: LC (= najmenej ohrozený) (Drohojowska i in. 2002)

Lokalita: PL: východná časť PPN, 25.VIII.2004 (Lis B. & Lis J. A. 2009)

Druhy dosiaľ neznáme na území Slovenska

Tieto druhy dosiaľ nie sú známe nielen na slovenskej strane Pienin, ale ani nikde inde na území Slovenskej republiky.

Corixa dentipes Thomson, 1869 (čelad' Corixidae)

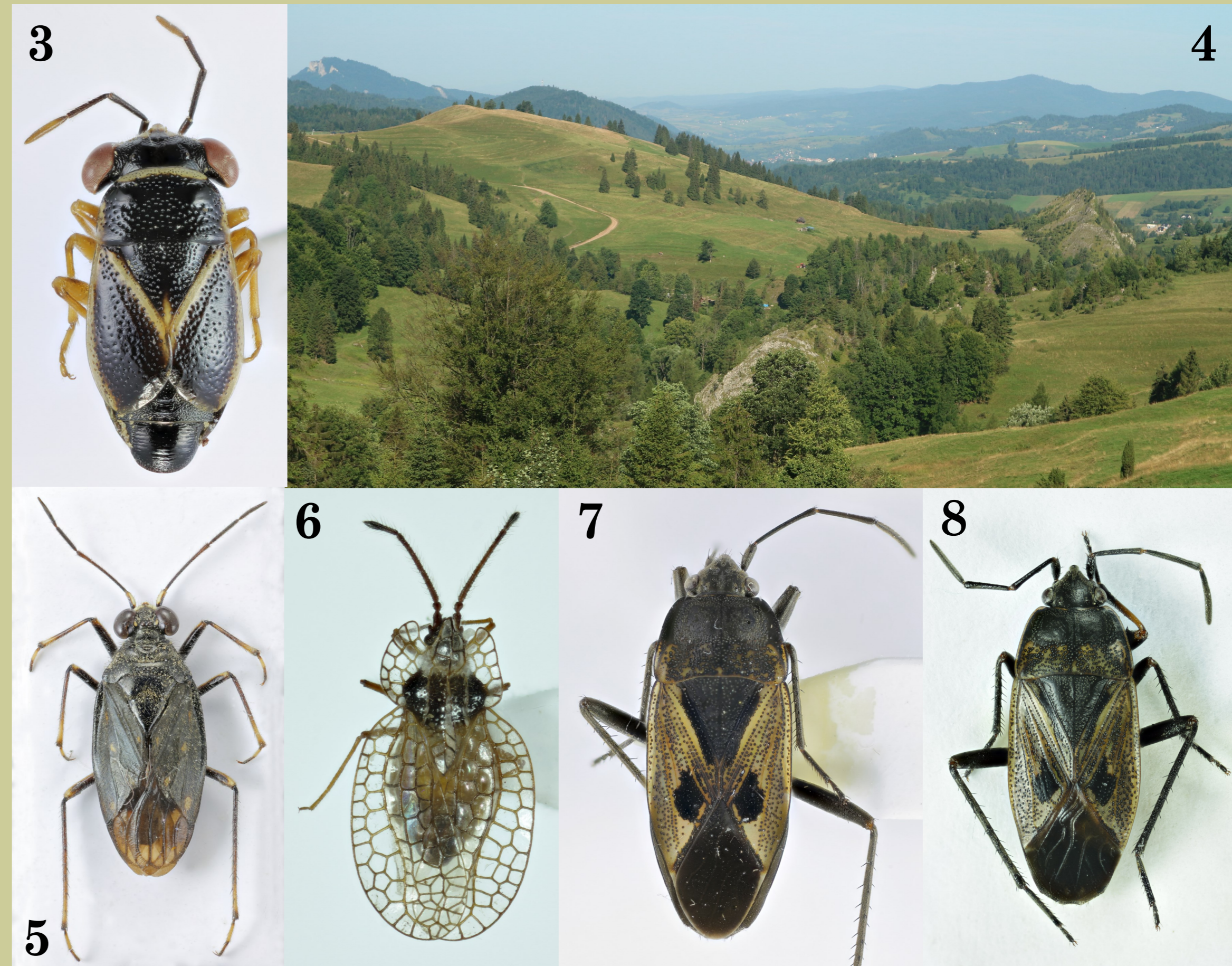
Lokalita: PL: Sromowce Wyżnie, tri lokality v blízkosti okolí (Mielewicz 1978)

Phytocoris confusus Reuter, 1896 (čelad' Miridae)

Lokalita: PL: „Pieniny“ (Smreczyński 1954)

Scoloposcelis pulchella (Zetterstedt, 1838) (čelad' Anthracoridae)

Lokalita: PL: Macelowa Góra, 30.VII.1993 (Lis B. 2001)



3: *Geocoris grylloides*. ♂, Male Pieniny, Berešík, 4.VIII.2017. 4: Pohľad do doliny Bialej Wody, na vršok Berešík (naľavo) a Smolegowu Skalu (pod ním napravo) sponize sedla Rozdziel na poľskej strane, v pozadí naľavo Tri Koruny a napravo počiatok svahov Beskidu Sądeckiego a ďalej v pozadí pohorie Gorce. Dole v popredí medzi stromami Kociubylska Skala. 5: *Macrosaldula scotica* (Curtis, 1835), Červený Kláštor, 2.VIII.2017, V. Hemala lgt. 6: *Deryphysia foliaceae* (Fallén, 1807). Straňany, dolina Kýčerského potoka. 7: *Rhyparochromus phoeniceus* (Rossi, 1794). Haligovské skaly. 8: *Rhyparochromus pini*. Ilustračná fotografia kusu zo zbierky autora. Na posledných dvoch fotografiách vidieť jemný rozdiel v okrají štítu medzi dvoma podobnými druhmi. Fotil: Luboš Dembický (3, 5–8), Vladimír Hemala (4).

Druhy nové pre územie Pienin

Geocoris grylloides (Linnaeus, 1761) (čelad' Geocoridae) → Obr. 3

Lokalita: Male Pieniny, na úpätí vrchu Berešík, na poľnej ílovitve ceste v blízkosti salaša, 49°23'54.70"N 20°34'44.12"E, 4.VIII.2017, 1 ♂, V. Hemala lgt. et det.

Druhy známe iba zo slovenskej strany Pienin

Saldula saltatoria (Linnaeus, 1758) (čelad' Saldidae)

Lokalita: Červený Kláštor, 8.VIII.1969 (Rus 2004)

Dictyla echii (Schrank, 1782) (čelad' Tingidae) → Obr. 9

Lokalita: Haligovské skaly, 1.VIII.2017 (Hemala in press.)

Adelphocoris vandalicus (Rossi, 1790) (čelad' Miridae) → Obr. 10

Lokalita: Kamenka, OCHÚ Rička, 2.VIII.2017 (Hemala in press.)

slatinné lúky v závere doliny potoka Rička, 2.VIII.2017 (Hemala in press.)

Spilostethus saxatilis (Scopoli, 1763) (čelad' Lygaeidae)

Lokalita: Kamenka, OCHÚ Rička, 2.VIII.2017 (Hemala in press.)

Straňanské sedlo → hrebeň pod Vysokými Skalkami, 3.VIII.2017 (Hemala in press.)

Cymus clavicularis (Fallén, 1807) (čelad' Cymidae)

Lokalita: Červený Kláštor, 1.IX.1959 (Stehlík & Vavřínová 1996)

Cymus glandicolor Hahn, 1832 (čelad' Cymidae) → Obr. 11

Lokalita: Jarabina, 30.IX.1978 (Stehlík & Vavřínová 1996)

slatinné lúky v závere doliny potoka Rička, 2.VIII.2017 (Hemala in press.)

Straňany, dolina Kýčerského potoka, 3.VIII.2017 (Hemala in press.)

Litmanová, dolina potoka Rozdziel, 4.VIII.2017 (Hemala in press.)

Drymus sylvaticus (Fabricius, 1775) (čelad' Rhyparochromidae)

Lokalita: Veľký Lipník, 13.IX.1981 (Stehlík & Vavřínová 1998)

Gastrodes abietum Bergröth, 1914 (čelad' Rhyparochromidae)

Lokalita: Jarabina, 30.IX.1978 (Stehlík & Vavřínová 1998)

Veľký Lipník, 13.IX.1981 (Stehlík & Vavřínová 1998)

Rhyparochromus pini (Linnaeus, 1758) (čelad' Rhyparochromidae) → Obr. 8

Lokalita: Červený Kláštor (Stehlík & Vavřínová 1999)

Jarabina (Stehlík & Vavřínová 1999)

Literatúra

- Balshaw V. 1982. Distributional atlas of beetles of Europe. Chalcididae. *Entomologist* 55: 25-28.
- Balshaw V. 1982. Distributional atlas of beetles of Europe. Heteroptera. *Entomologist* 55: 29-32.
- Balshaw V. 1982. Distributional atlas of beetles of Europe. Pentatomidae. *Entomologist* 55: 33-36.
- Balshaw V. 1982. Distributional atlas of beetles of Europe. Tingidae. *Entomologist* 55: 37-38.
- Balshaw V. 1982. Distributional atlas of beetles of Europe. Lygaeidae. *Entomologist* 55: 39-42.
- Balshaw V. 1982. Distributional atlas of beetles of Europe. Miridae. *Entomologist* 55: 43-46.
- Balshaw V. 1982. Distributional atlas of beetles of Europe. Cimidae. *Entomologist* 55: 47-50.
- Balshaw V. 1982. Distributional atlas of beetles of Europe. Coreidae. *Entomologist* 55: 51-52.
- Balshaw V. 1982. Distributional atlas of beetles of Europe. Anthracoridae. *Entomologist* 55: 53-54.
- Balshaw V. 1982. Distributional atlas of beetles of Europe. Cimidae. *Entomologist* 55: 55-56.
- Balshaw V. 1982. Distributional atlas of beetles of Europe. Cimidae. *Entomologist* 55: 57-58.
- Balshaw V. 1982. Distributional atlas of beetles of Europe. Cimidae. *Entomologist* 55: 59-60.
- Balshaw V. 1982. Distributional atlas of beetles of Europe. Cimidae. *Entomologist* 55: 61-62.
- Balshaw V. 1982. Distributional atlas of beetles of Europe. Cimidae. *Entomologist* 55: 63-64.
- Balshaw V. 1982. Distributional atlas of beetles of Europe. Cimidae. *Entomologist* 55: 65-66.
- Balshaw V. 1982. Distributional atlas of beetles of Europe. Cimidae. *Entomologist* 55: 67-68.
- Balshaw V. 1982. Distributional atlas of beetles of Europe. Cimidae. *Entomologist* 55: 69-70.
- Balshaw V. 1982. Distributional atlas of beetles of Europe. Cimidae. *Entomologist* 55: 71-72.
- Balshaw V. 1982. Distributional atlas of beetles of Europe. Cimidae. *Entomologist* 55: 73-74.
- Balshaw V. 1982. Distributional atlas of beetles of Europe. Cimidae. *Entomologist* 55: 75-76.
- Balshaw V. 1982. Distributional atlas of beetles of Europe. Cimidae. *Entomologist* 55: 77-78.
- Balshaw V. 1982. Distributional atlas of beetles of Europe. Cimidae. *Entomologist* 55: 79-80.
- Balshaw V. 1982. Distributional atlas of beetles of Europe. Cimidae. *Entomologist* 55: 81-82.
- Balshaw V. 1982. Distributional atlas of beetles of Europe. Cimidae. *Entomologist* 55: 83-84.
- Balshaw V. 1982. Distributional atlas of beetles of Europe. Cimidae. *Entomologist* 55: 85-86.
- Balshaw V. 1982. Distributional atlas of beetles of Europe. Cimidae. *Entomologist* 55: 87-88.
- Balshaw V. 1982. Distributional atlas of beetles of Europe. Cimidae. *Entomologist* 55: 89-90.
- Balshaw V. 1982. Distributional atlas of beetles of Europe. Cimidae. *Entomologist* 55: 91-92.
- Balshaw V. 1982. Distributional atlas of beetles of Europe. Cimidae. *Entomologist* 55: 93-94.
- Balshaw V. 1982. Distributional atlas of beetles of Europe. Cimidae. *Entomologist* 55: 95-96.
- Balshaw V. 1982. Distributional atlas of beetles of Europe. Cimidae. *Entomologist* 55: 97-98.
- Balshaw V. 1982. Distributional atlas of beetles of Europe. Cimidae. *Entomologist* 55: 99-100.
- Balshaw V. 1982. Distributional atlas of beetles of Europe. Cimidae. *Entomologist* 55: 101-102.
- Balshaw V. 1982. Distributional atlas of beetles of Europe. Cimidae. *Entomologist* 55: 103-104.
- Balshaw V. 1982. Distributional atlas of beetles of Europe. Cimidae. *Entomologist* 55: 105-106.
- Balshaw V. 1982. Distributional atlas of beetles of Europe. Cimidae. *Entomologist* 55: 107-108.
- Balshaw V. 1982. Distributional atlas of beetles of Europe. Cimidae. *Entomologist* 55: 109-110.
- Balshaw V. 1982. Distributional atlas of beetles of Europe. Cimidae. *Entomologist* 55: 111-112.
- Balshaw V. 1982. Distributional atlas of beetles of Europe. Cimidae. *Entomologist* 55: 113-114.
- Balshaw V. 1982. Distributional atlas of beetles of Europe. Cimidae. *Entomologist* 55: 115-116.
- Balshaw V. 1982. Distributional atlas of beetles of Europe. Cimidae. *Entomologist* 55: 117-118.
- Balshaw V. 1982. Distributional atlas of beetles of Europe. Cimidae. *Entomologist* 55: 119-120.
- Balshaw V. 1982. Distributional atlas of beetles of Europe. Cimidae. *Entomologist* 55: 121-122.
- Balshaw V. 1982. Distributional atlas of beetles of Europe. Cimidae. *Entomologist* 55: 123-124.
- Balshaw V. 1982. Distributional atlas of beetles of Europe. Cimidae. *Entomologist* 55: 125-126.
- Balshaw V. 1982. Distributional atlas of beetles of Europe. Cimidae. *Entomologist* 55: 127-128.
- Balshaw V. 1982. Distributional atlas of beetles of Europe. Cimidae. *Entomologist* 55: 129-130.
- Balshaw V. 1982. Distributional atlas of beetles of Europe. Cimidae. *Entomologist* 55: 131-132.
- Balshaw V. 1982. Distributional atlas of beetles of Europe. Cimidae. *Entomologist* 55: 133-134.
- Balshaw V. 1982. Distributional atlas of beetles of Europe. Cimidae. *Entomologist* 55: 135-136.
- Balshaw V. 1982. Distributional atlas of beetles of Europe. Cimidae. *Entomologist* 55: 137-138.
- Balshaw V. 1982. Distributional atlas of beetles of Europe. Cimidae. *Entomologist* 55: 139-140.
- Balshaw V. 1982. Distributional atlas of beetles of Europe. Cimidae. *Entomologist* 55: 141-142.
- Balshaw V. 1982. Distributional atlas of beetles of Europe. Cimidae. *Entomologist* 55: 143-144.
- Balshaw V. 1982. Distributional atlas of beetles of Europe. Cimidae. *Entomologist* 55: 145-146.
- Balshaw V. 1982. Distributional atlas of beetles of Europe. Cimidae. *Entomologist* 55: 147-148.
- Balshaw V. 1982. Distributional atlas of beetles of Europe. Cimidae. *Entomologist* 55: 149-150.
- Balshaw V. 1982. Distributional atlas of beetles of Europe. Cimidae. *Entomologist* 55: 151-152.
- Balshaw V. 1982. Distributional atlas of beetles of Europe. Cimidae. *Entomologist* 55: 153-154.
- Balshaw V. 1982. Distributional atlas of beetles of Europe. Cimidae. *Entomologist* 55: 155-156.
- Balshaw V. 1982. Distributional atlas of beetles of Europe. Cimidae. *Entomologist* 55: 157-158.
- Balshaw V. 1982. Distributional atlas of beetles of Europe. Cimidae. *Entomologist* 55: 159-160.
- Balshaw V. 1982. Distributional atlas of beetles of Europe. Cimidae. *Entomologist* 55: 161-162.
- Balshaw V. 1982. Distributional atlas of beetles of Europe. Cimidae. *Entomologist* 55: 163-164.
- Balshaw V. 1982. Distributional atlas of beetles of Europe. Cimidae. *Entomologist* 55: 165-166.
- Balshaw V. 1982. Distributional atlas of beetles of Europe. Cimidae. *Entomologist* 55: 167-168.
- Balshaw V. 1982. Distributional atlas of beetles of Europe. Cimidae. *Entomologist* 55: 169-170.
- Balshaw V. 1982. Distributional atlas of beetles of Europe. Cimidae. *Entomologist* 55: 171-172.
- Balshaw V. 1982. Distributional atlas of beetles of Europe. Cimidae. *Entomologist* 55: 173-174.
- Balshaw V. 1982. Distributional atlas of beetles of Europe. Cimidae. *Entomologist* 55: 175-176.
- Balshaw V. 1982. Distributional atlas of beetles of Europe. Cimidae. *Entomologist* 55: 177-178.
- Balshaw V. 1982. Distributional atlas of beetles of Europe. Cimidae. *Entomologist* 55: 179-180.
- Balshaw V. 1982. Distributional atlas of beetles of Europe. Cimidae. *Entomologist* 55: 181-182.
- Balshaw V. 1982. Distributional atlas of beetles of Europe. Cimidae. *Entomologist* 55: 183-184.
- Balshaw V. 1982. Distributional atlas of beetles of Europe. Cimidae. *Entomologist* 55: 185-186.
- Balshaw V. 1982. Distributional atlas of beetles of Europe. Cimidae. *Entomologist* 55: 187-188.
- Balshaw V. 1982. Distributional atlas of beetles of Europe. Cimidae. *Entomologist* 55: 189-190.
- Balshaw V. 1982. Distributional atlas of beetles of Europe. Cimidae. *Entomologist* 55: 191-192.
- Balshaw V. 1982. Distributional atlas of beetles of Europe. Cimidae. *Entomologist* 55: 193-194.
- Balshaw V. 1982. Distributional atlas of beetles of Europe. Cimidae. *Entomologist* 55: 195-196.
- Balshaw V. 1982. Distributional atlas of beetles of Europe. Cimidae. *Entomologist* 55: 197-198.
- Balshaw V. 1982. Distributional atlas of beetles of Europe. Cimidae. *Entomologist* 55: 199-200.
- Balshaw V. 1982. Distributional atlas of beetles of Europe. Cimidae. *Entomologist* 55: 201-202.
- Balshaw V. 1982. Distributional atlas of beetles of Europe. Cimidae. *Entomologist* 55: 203-204.
- Balshaw V. 1982. Distributional atlas of beetles of Europe. Cimidae. *Entomologist* 55: 205-206.
- Balshaw V. 1982. Distributional atlas of beetles of Europe. Cimidae. *Entomologist* 55: 207-208.
- Balshaw V. 1982. Distributional atlas of beetles of Europe. Cimidae. *Entomologist* 55: 209-210.
- Balshaw V. 1982. Distributional atlas of beetles of Europe. Cimidae. *Entomologist* 55: 211-212.
- Balshaw V. 1982. Distributional atlas of beetles of Europe. Cimidae. *Entomologist* 55: 213-214.
- Balshaw V. 1982. Distributional atlas of beetles of Europe. Cimidae. *Entomologist* 55: 215-216.
- Balshaw V. 1982. Distributional atlas of beetles of Europe. Cimidae. *Entomologist* 55: 217-218.
- Balshaw V. 1982. Distributional atlas of beetles of Europe. Cimidae. *Entomologist* 55: 219-220.
- Balshaw V. 1982. Distributional atlas of beetles of Europe. Cimidae. *Entomologist* 55: 221-222.
- Balshaw V. 1982. Distributional atlas of beetles of Europe. Cimidae. *Entomologist* 55: 223-224.
- Balshaw V. 1982. Distributional atlas of beetles of Europe. Cimidae. *Entomologist* 55: 225-226.
- Balshaw V. 1982. Distributional atlas of beetles of Europe. Cimidae. *Entomologist* 55: 227-228.
- Balshaw V. 1982. Distributional atlas of beetles of Europe. Cimidae. *Entomologist* 55: 229-230.
- Balshaw V. 1982. Distributional atlas of beetles of Europe. Cimidae. *Entomologist* 55: 231-232.
- Balshaw V. 1982. Distributional atlas of beetles of Europe. Cimidae. *Entomologist* 55: 233-234.
- Balshaw V. 1982. Distributional atlas of beetles of Europe. Cimidae. *Entomologist* 55: 235-236.
- Balshaw V. 1982. Distributional atlas of beetles of Europe. Cimidae. *Entomologist* 55: 237-238.
- Balshaw V. 1982. Distributional atlas of beetles of Europe. Cimidae. *Entomologist* 55: 239-240.
- Balshaw V. 1982. Distributional atlas of beetles of Europe. Cimidae. *Entomologist* 55: 241-242.
- Balshaw V. 1982. Distributional atlas of beetles of Europe. Cimidae. *Entomologist* 55: 243-244.
- Balshaw V. 1982. Distributional atlas of beetles of Europe. Cimidae. *Entomologist* 55: 245-246.
- Balshaw V. 1982. Distributional atlas of beetles of Europe. Cimidae. *Entomologist* 55: 247-248.
- Balshaw V. 1982. Distributional atlas of beetles of Europe. Cimidae. *Entomologist* 55: 249-250.
- Balshaw V. 1982. Distributional atlas of beetles of Europe. Cimidae. *Entomologist* 55: 251-252.
- Balshaw V. 1982. Distributional atlas of beetles of Europe. Cimidae. *Entomologist* 55: 253-254.
- Balshaw V. 1982. Distributional atlas of beetles of Europe. Cimidae. *Entomologist* 55: 255-256.
- Balshaw V. 1982. Distributional atlas of beetles of Europe. Cimidae. *Entomologist* 55: 257-258.
- Balshaw V. 1982. Distributional atlas of beetles of Europe. Cimidae. *Entomologist* 55: 259-260.
- Balshaw V. 1982. Distributional atlas of beetles of Europe. Cimidae. *Entomologist* 55: 261-262.
- Balshaw V. 1982. Distributional atlas of beetles of Europe. Cimidae. *Entomologist* 55: 263-264.
- Balshaw V. 1982. Distributional atlas of beetles of Europe. Cimidae. *Entomologist* 55: 265-266.
- Balshaw V. 1982. Distributional atlas of beetles of Europe. Cimidae. *Entomologist* 55: 267-268.
- Balshaw V. 1982. Distributional atlas of beetles of Europe. Cimidae. *Entomologist* 55: 269-270.
- Balshaw V. 1982. Distributional atlas of beetles of Europe. Cimidae. *Entomologist* 55: 271-272.
- Balshaw V. 1982. Distributional atlas of beetles of Europe. Cimidae. *Entomologist* 55: 273-274.
- Balshaw V. 1982. Distributional atlas of beetles of Europe. Cimidae. *Entomologist* 55: 275-276.
- Balshaw V. 1982. Distributional atlas of beetles of Europe. Cimidae. *Entomologist* 55: 277-278.
- Balshaw V. 1982. Distributional atlas of beetles of Europe. Cimidae. *Entomologist* 55: 279-280.
- Balshaw V. 1982. Distributional atlas of beetles of Europe. Cimidae. *Entomologist* 55: 281-282.
- Balshaw V. 1982. Distributional atlas of beetles of Europe. Cimidae. *Entomologist* 55: 283-284.
- Balshaw V. 1982. Distributional atlas of beetles of Europe. Cimidae. *Entomologist* 55: 285-286.
- Balshaw V. 1982. Distributional atlas of beetles of Europe. Cimidae. *Entomologist* 55: 287-288.
- Balshaw V. 1982. Distributional atlas of beetles of Europe. Cimidae. *Entomologist* 55: 289-290.
- Balshaw V. 1982. Distributional atlas of beetles of Europe. Cimidae. *Entomologist* 55: 291-292.
- Balshaw V. 1982. Distributional atlas of beetles of Europe. Cimidae. *Entomologist* 55: 293-294.
- Balshaw V. 1982. Distributional atlas of beetles of Europe. Cimidae. *Entomologist* 55: 295-296.
- Balshaw V. 1982. Distributional atlas of beetles of Europe. Cimidae. *Entomologist* 55: 297-298.
- Balshaw V. 1982. Distributional atlas of beetles of Europe. Cimidae. *Entomologist* 55: 299-300.
- Balshaw V. 1982. Distributional atlas of beetles of Europe. Cimidae. *Entomologist* 55: 301-302.
- Balshaw V. 1982. Distributional atlas of beetles of Europe. Cimidae. *Entomologist* 55: 303-304.
- Balshaw V. 1982. Distributional atlas of beetles of Europe. Cimidae. *Entomologist* 55: 305-306.
- Balshaw V. 1982. Distributional atlas of beetles of Europe. Cimidae. *Entomologist* 55: 307-308.
- Balshaw V. 1982. Distributional atlas of beetles of Europe. Cimidae. *Entomologist* 55: 309-310.
- Balshaw V. 1982. Distributional atlas of beetles of Europe. Cimidae. *Entomologist* 55: 311-312.
- Balshaw V. 1982. Distributional atlas of beetles of Europe. Cimidae. *Entomologist* 55: 313-314.
- Balshaw V. 1982. Distributional atlas of beetles of Europe. Cimidae. *Entomologist* 55: 315-316.
- Balshaw V. 1982. Distributional atlas of beetles of Europe. Cimidae. *Entomologist* 55: 317-318.
- Balshaw V. 1982. Distributional atlas of beetles of Europe. Cimidae. *Entomologist* 55: 319-320.
- Balshaw V. 1982. Distributional atlas of beetles of Europe. Cimidae.